

NGURA

January 12th – January 31st, 2016

By Joshua J. Smith

'Ngura' is Joshua J Smith's debut solo exhibition comprising of stunning aerial photographs of central Australia.

His images capture a landscape that forms the backbone of our national identity. One which has been occupied for over 40,000 years by the traditional owners and serves as their home, camp, place and land. The Anangu people have a word in Pitjantjatjara for this - 'Ngura'.

With a passion for both film and photography, Joshua has travelled extensively, both in Australia and overseas, over a twenty year period. 'Ngura' sees Smith being drawn back to his origins, and his strong bond with rural and regional Australia.

Joshua says:

"With my good mate and pilot, Joe, we set out from North West NSW and flew inland with the idea of capturing Australia's unique landscape that defines our national identity and what separates us from the rest of the world.

What we encountered was the spiritual and emotional legacy of an ancient natural terrain. Rhythmic, undulating plains merge into dunes and deserts which are traversed by long forgotten rivers. Sand, wind and salt construct the brush strokes on this ochre red canvas.

These images present a window into the alluring and abstract elegance that is central Australia. I hope you enjoy."

Large (1524 x 1132) edition of 9, **\$3250 framed / \$2500 unframed**

Medium (1117 x 838), edition of 9, **\$2,400 framed / \$1800 unframed**

Paper stock: Canson Fibre Rag Platine

All images available in both large & medium.



blackeyegallery.com.au



001
 Latitude: 28.921125° S
 Longitude: 137.757167° E
 Altitude: 643 m (2111 ft)
 Direction: 354°



002
 Latitude: 28.104017° S
 Longitude: 144.171573° E
 Altitude: 451 m (1479 ft)
 Direction: 330°



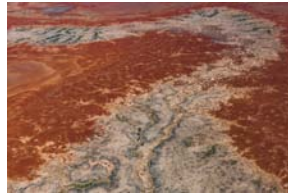
003
 Latitude: 27.15608° S
 Longitude: 142.074172° E
 Altitude: 542 m (1779 ft)
 Direction: 204°



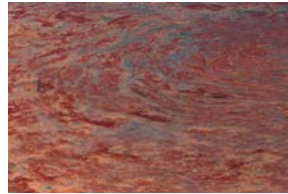
004
 Latitude: 26.528733° S
 Longitude: 140.66709° E
 Altitude: 501 m (1645 ft)
 Direction: 209°



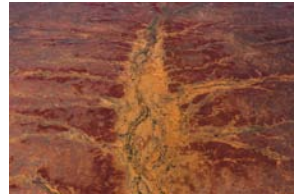
005
 Latitude: 26.365555° S
 Longitude: 140.274445° E
 Altitude: 329 m (1079 ft)
 Direction: 180°



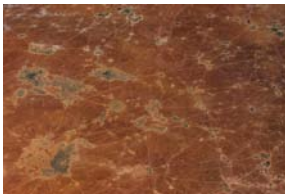
006
 Latitude: 26.340278° S
 Longitude: 140.217222° E
 Altitude: 366 m (1202 ft)
 Direction: 225°



007
 Latitude: 26.317973° S
 Longitude: 140.157472° E
 Altitude: 368 m (1209 ft)
 Direction: 189°



008
 Latitude: 26.305555° S
 Longitude: 140.1275° E
 Altitude: 412 m (1353 ft)
 Direction: 225°



009
 Latitude: 26.205747° S
 Longitude: 139.900983° E
 Altitude: 412 m (1352 ft)
 Direction: 186°



010
 Latitude: 26.15768° S
 Longitude: 139.791885° E
 Altitude: 429 m (1406 ft)
 Direction: 170°



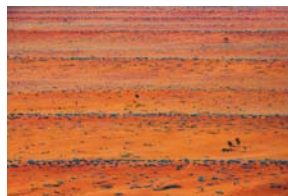
011
 Latitude: 26.121285° S
 Longitude: 139.72143° E
 Altitude: 434 m (1422 ft)
 Direction: 253°



012
 Latitude: 25.084925° S
 Longitude: 137.112428° E
 Altitude: 262 m (860 ft)
 Direction: 259°



013
 Latitude: 25.03538° S
 Longitude: 131.712073° E
 Altitude: 930 m (3052 ft)
 Direction: 199°



014
 Latitude: 24.42868° S
 Longitude: 135.460708° E
 Altitude: 398 m (1305 ft)
 Direction: 247°



015
 Latitude: 27.933655° S
 Longitude: 135.730328° E
 Altitude: 588 m (1929 ft)
 Direction: 4°



016
 Latitude: 28.870345° S
 Longitude: 137.083064° E
 Altitude: 209 m (685 ft)
 Direction: 138°



017
 Latitude: 28.928372° S
 Longitude: 137.843553° E
 Altitude: 686 m (2251 ft)
 Direction: 316°



018
 Latitude: 28.99706° S
 Longitude: 139.033908° E
 Altitude: 294 m (966 ft)
 Direction: 32°



019
 Latitude: 28.99627° S
 Longitude: 139.05313° E
 Altitude: 277 m (910 ft)
 Direction: 357°



020
 Latitude: 29.045486° S
 Longitude: 139.26322° E
 Altitude: 379 m (1243 ft)
 Direction: 345°

