

WITHOUT WATER

BY ISAMU SAWA
SEPT 26 - OCT 15, 2017

WITHOUT WATER
PLANTS WITHER AND
DIE. BUT EVEN IN
DEATH THEIR BEAUTY
LINGERS IN A
MOMENT OF
FLEETING, SERENE
IMPERFECTION;
A DELICATE DEATH,
PRESERVED FOREVER
FOR THOSE WHO
REMAIN

Adopting a sophisticated macro photographic technique more commonly used in science than art, 'Without Water' is a series of highly detailed botanical images reminiscent of the plates and sketches of the Georgian botanists. Sawa renders his subjects rich in texture and form, revealing an almost otherworldly beauty.

BIO

Born in Japan and raised in Australia, Isamu Sawa is one of Australia's leading commercial photographers, with a career spanning more than 20 years. He has worked for high-level commercial clients including Mercedes Benz, Mazda, Domaine Chandon, Penfolds and Public Transport Victoria. His editorial work has also featured in GQ, The Age and Vogue, shooting portraits of well-known identities including fashion designer Jean Paul Gaultier, actor Geoffrey Rush and champion cyclist Cadel Evans. He has exhibited photographic work with his father, Peter Sawa, at the Joshua McClelland Print Room (Two Generations – Two Views, opened by the late Kate Gollings, in 1999), at group shows at The Compound Interest (The Material Series – Foto @ Pin Up, in 2013 and 2014) and his first solo show Without Water in Melbourne, 2015 (opened by John Gollings).

Known to friends simply as 'Issey', he lives in Melbourne, Australia, with his wife Basia and their young daughter, Hannah.

Plate 01: Rose #1

Edition: Signed & Limited to 10 + AP

Size: 1118mm x 1118mm (print size)

Flower: Rosa_hybrida

Framed print: \$3,450*

Print only: \$2,450**



Plate 02: Tulip

Edition: Signed & Limited to 10 + AP

Size: 1118mm x 1397mm (print size)

Flower: Tulipa

Framed print: n/a

Print only: n/a

SOLD OUT

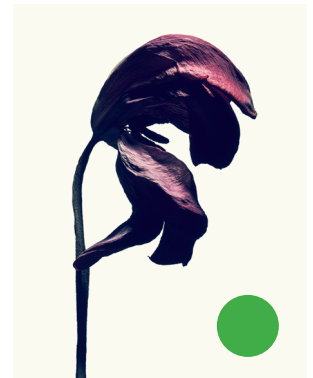


Plate 03: Rose #2

Edition: Signed & Limited to 10 + AP

Size: 1118mm x 1397mm (print size)

Flower: Rosa_hybrida

Framed print: \$3,450*

Print only: \$2,450**



Plate 04: Rose #3

Edition: Signed & Limited to 10 + AP

Size: 1118mm x 1397mm (print size)

Flower: Rosa_hybrida

Framed print: \$3,450*

Print only: \$2,450**

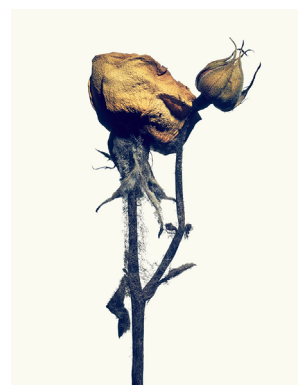


Plate 05: Bouvardia

Edition: Signed & Limited to 10 + AP

Size: 1118mm x 1397mm (print size)

Flower: Bouvardia_leiantha

Framed print: \$3,450*

Print only: \$2,450**

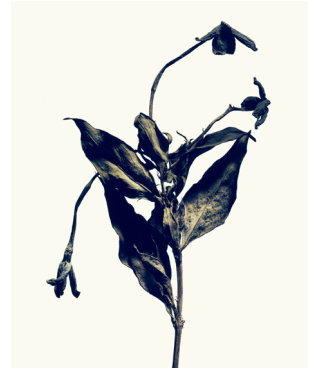


Plate 06: Rose #4

Edition: Signed & Limited to 10 + AP

Size: 1118mm x 1397mm (print size)

Flower: Rosa_hybrida

Framed print: \$3,450*

Print only: \$2,450**

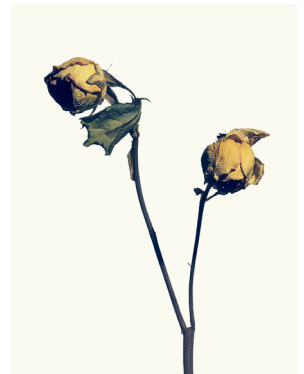


Plate 07: Lisianthus

Edition: Signed & Limited to 10 + AP

Size: 1118mm x 1397mm (print size)

Flower: Eustoma_grandiflorum

Framed print: \$3,450*

Print only: \$2,450**



Plate 08: Rose #5

Edition: Signed & Limited to 10 + AP

Size: 1397mm x 1118mm (print size)

Flower: Rosa_hybrida

Framed print: \$3,450*

Print only: \$2,450**



Plate 09: Hydrangea

Edition: Signed & Limited to 10 + AP

Size: 1397mm x 1118mm (print size)

Flower: *Hydrangea_macrophylla*

Framed print: \$3,450*

Print only: \$2,450**



Plate 10: Anthurium

Edition: Signed & limited to 10 + AP

Size: 1397mm x 1118mm (print size)

Flower: *Anthurium_andreanum*

Framed print: \$3,450*

Print only: \$2,450**



Plate 11: Monstera

Edition: Signed & limited to 10 + AP

Size: 1397mm x 1118mm (print size)

Flower: *Monstera_deliciosa*

Framed print: \$3,450*

Print only: \$2,450**



Plate 12: Camellia

Edition: Signed & limited to 10 + AP

Size: 1397mm x 1118mm (print size)

Flower: *Camellia_sasanqua*

Framed print: \$3,450*

Print only: \$2,450**



Plate 13: Peony

Edition: Signed & limited to 10 + AP

Size: 1118mm x 1397mm (print size)

Flower: Peony_paeonia

Framed print: \$3,450*

Print only: \$2,450**



Plate 14: Sea Holly

Edition: Signed & limited to 10 + AP

Size: 1397mm x 1118mm (print size)

Flower: Sea Holly_eryngium maritimum

Framed print: \$3,450*

Print only: \$2,450**



* Archival Pigment Ink on Cotton Rag (Canson Rag Photographique 310gsm 100% Cotton).

Artwork dry mounted on DiBond; Hand finished Japan Black Victoria Ash picture frame (30x45mm profile), spacers, glass and hangars.

** Archival Pigment Ink on Cotton Rag (Canson Rag Photographique 310gsm 100% Cotton).



BLACK EYE GALLERY
3/138 Darlinghurst Rd,
Darlinghurst 2010 Telephone 02 8084 7541
www.blackeyegallery.com.au

All sale enquires tom@blackeyegallery.com.au
mobile 0411 874 673

www.withoutwater.com.au

Proudly Sponsored by:

arten
design

Boll & Doggett
SAMPLE

Bambra
Be
Bold.



— SOCIAL WINERY —

Kayell
australia
Imaging • Graphics • Media

PHASE ONE
what the world's best photography is made of